

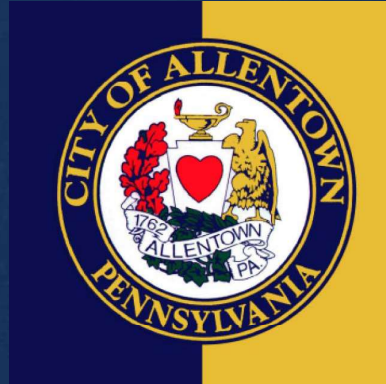


## Meeting Agenda

- Introductions
- Why Plan?
- Project Schedule
- Project Scope
- Existing Data
- Site Reconnaissance – August 20, 2024
- Public Opinion Survey
- Brainstorming & Discussion
- Next Steps



## City Contacts



ALLENTOWN PARKS AND RECREATION  
DEPARTMENT – 610.437.7757

Mandy Tolino, Director  
[Mandy.Tolino@allentownpa.gov](mailto:Mandy.Tolino@allentownpa.gov)

Bryne Heffner-Bair, Project Coordinator  
[Bryne.Heffner@allentownpa.gov](mailto:Bryne.Heffner@allentownpa.gov)

## Project Team

SIMONE COLLINS LANDSCAPE ARCHITECTURE – 610.239.7601

Pankaj Jobanputra, AICP, Project Manager  
[pjobanputra@simonecollins.com](mailto:pjobanputra@simonecollins.com)

Anita Nardone, PE, Stormwater Analyst  
[anardone@simonecollins.com](mailto:anardone@simonecollins.com)

Robert Gladfelter, RLA, ASLA, Project LA,  
Natural Resources Analyst  
[rgladfelter@simonecollins.com](mailto:rgladfelter@simonecollins.com)

Leonard Bustos, Staff LA  
[lbustos@simonecollins.com](mailto:lbustos@simonecollins.com)

William Collins, RLA, Principal  
[wcollins@simonecollins.com](mailto:wcollins@simonecollins.com)



CERTIFIED PARK & RECREATION  
PROFESSIONALS

Derek Dureka, CPRP  
[derekdureka@gmail.com](mailto:derekdureka@gmail.com)

Kathleen Muller, CPRP  
[muller.recreation@gmail.com](mailto:muller.recreation@gmail.com)



# Simone Collins philosophy

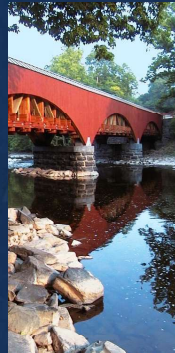
*Simone Collins Landscape Architecture is a planning and design firm committed to creating an ecologically enduring society.*



**Conduct**  
careful research.



**Respect**  
ecological context  
and limits of each  
site.



**Build**  
on sustainable  
practices of the  
past.



**Employ**  
new methods  
prudently.



**Conserve**  
materials and  
energy.



**Support**  
local economies.



**Design**  
biologically &  
culturally diverse  
communities.

## Simone Collins experience

- Services expertise: Parks, recreation & trails
- 34 years in service, Simone Collins founded in 1990
- Principals offer 45+ years experience each
- 45 Design awards – local, state, national
- Experience with communities across PA
- Trusted partner/ consultant to DCNR
- Total park projects Completed: 130+

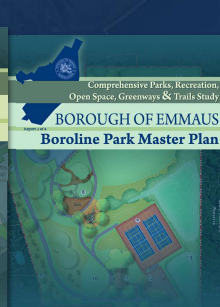
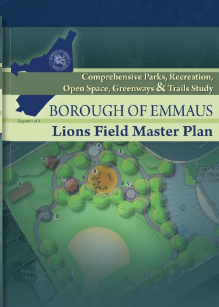
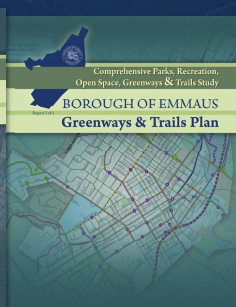
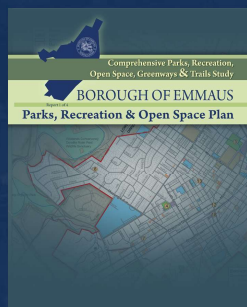
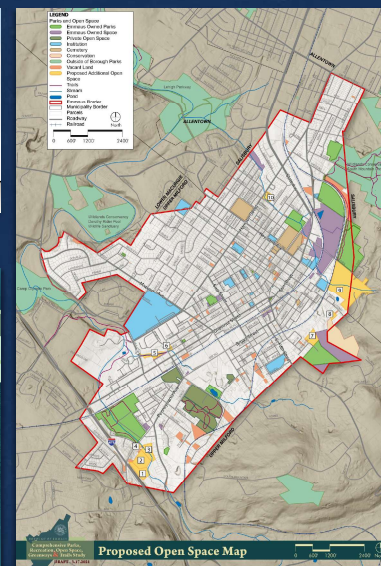


South Bethlehem Greenway



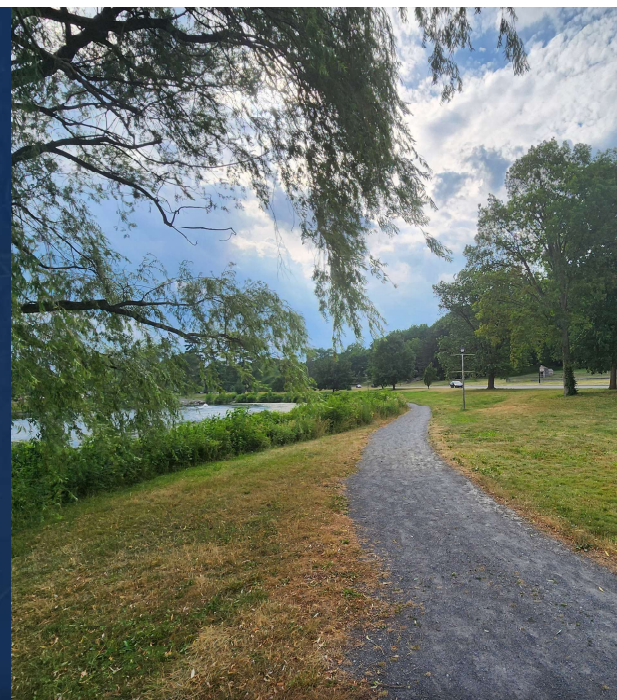
## Example projects

- Borough of Emmaus, Lehigh County
- Parks, Recreation & Open Space Plan
- Greenways & Trails Plan
- Lions Field & Boroline Park Master Plans



## Why Plan?

- Plan for **current needs** and **future growth** of Allentown's open space, recreation system, and environmental resources
- Parks, trails, and open space are important areas where residents of all ages, ethnicity, economic status, and abilities will interact and **create community building experiences**
- Community facilities are **essential green infrastructure** that provide physical, spiritual, and health benefits
- Make the community **attractive** to residents and businesses.





## What are the Plan products ?

- Evaluation of the existing park, with recommendations for improvements
- Evaluation of other lands for parks or preserved open space
- Recommendations for non-motorized trails/sidewalks between facilities
- Create a **planning tool** to guide the City decision-making for **10 to 20 years** to improve facilities, preserve open space and environmental resources, and enhance recreational programming, maintenance, and staffing



## What are major elements of a Plan ?

*What are the most important components of a comprehensive park, recreation, open space, greenways, and trails plan?*

- Public participation is an essential part of the plan. SC conducts public participation programs to ensure that *"every voice is heard, and all ideas are honored"*
- SC will help guide Allentown stakeholders through this dynamic process – and present information, options, and recommendations to guide decisions over the next 10 to 20+ years.
- **You** will help make the decisions for **your** plan.





## Project Schedule

Meeting Type	Date	Time
<b>Committee Meeting #1</b>	<b>Wednesday, September 25, 2024</b>	<b>7pm-9pm</b>
Public Meeting #1 – Project Intro / Brainstorming	Tuesday, October 29, 2024	6pm-8pm
Committee Meeting #2	Wednesday, November 13, 2024	7pm-9pm
Public Meeting #2 – Existing Conditions, Initial Concepts	Wednesday, January 8, 2025	6pm-8pm
Committee Meeting #3	Wednesday, January 22, 2025	7pm-9pm
Public Meeting #3 – Refined Plans, Admin Analysis	Wednesday, February 26, 2025	6pm-8pm
Committee Meeting #4	Wednesday, April 9, 2025	7pm-9pm
Public Meeting #4 – Finance, Programming, Refined Plans	Wednesday, April 30, 2025	6pm-8pm
Key Person Interviews (20)	TBD	TBD
Committee Meeting #5	Wednesday, June 11, 2025	7pm-9pm
Online Public Opinion Survey	October 2024 – May 2025	
Public Meeting #5 – Draft Plans	Wednesday, June 25, 2025	6pm-8pm
Committee Meeting #6	Wednesday, September 10, 2025	7pm-9pm
City Council Meeting (to Adopt Plan – TBD)	October 2025	
City Staff Meetings	Estimated 1 per month	Online

## Project Scope

- **Existing Conditions Inventory & Data Collection**
  - Site Reconnaissance
  - Mapping
  - Review of City Ordinances and Previous Plans
- **Public Participation**
  - 6 Committee Meetings
  - 5 Public Meetings
  - 20 Key Person Interviews
  - Public Opinion Survey
  - Meetings with City Staff
- **Purpose, Goals, Objectives**
  - SC team will develop goals with the Township, committee & residents
  - Will be revised/refined as the plan advances
- **Recreation Facilities & Open Space Inventory & Analysis**
  - Benchmark Similar Communities
  - Stormwater Analysis
  - Opportunities for new trails/connections and park space
- **Personnel, Administration, Maintenance, Programs & Service**
  - Recommendations
- **Design Process & Recommendations**
  - Cost Estimates
  - Funding Strategy
  - Draft Plan – 30-Day Public Review
  - Final Plan & Report
- **Master Site Plans**
  - Fountain Park
  - Bucky Boyle Park
  - Roosevelt Park





## Allentown Park System - metrics

City TOTAL park acreage: **2,000 acres**

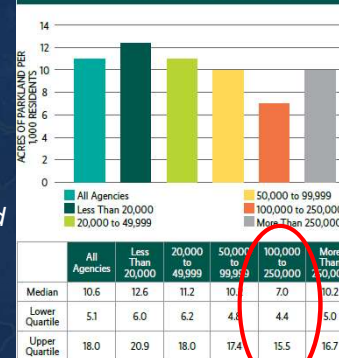
City TOTAL population (2023) **125,845**

**15.9 acres of parkland per 1,000 residents:**

*More than double the national metric of 7.0 acres and more acres per resident than any city its size*



**FIGURE 2: ACRES OF PARKLAND PER 1,000 RESIDENTS (BY JURISDICTION POPULATION)**



*Source: The NRPA gathers data annually from parks and recreation agencies nationwide to allow them to compare their own performance metrics with those of other U.S. agencies and to identify areas of excellence and areas in need of improvement.*



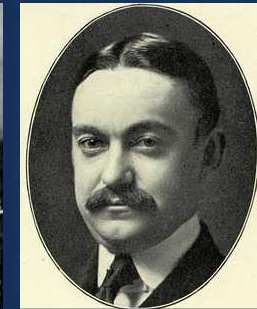
# Allentown Parks History

General Harry Trexler is considered the “Father of the Allentown Park System”

- Inspired by the City Beautiful movement
- Helped develop the first municipal park, West Park
- Trexler’s summer estate became Trexler Memorial Park
- Trexler Trust continues to provide funding for City’s parks and maintenance

First city playground was established in Fountain Park in 1912

West Park bandshell was designed by Horace Trumbauer and is used by Allentown Band, the oldest civilian concert band in the Country.



# Current & Prior Planning Initiatives

The team will review/assess current & prior planning documents.

These include but are not limited to:

- Allentown Parks and Recreation Master Plan (2006)
- Lehigh Valley Greenways Plan (2007)
- Allentown: Connecting our Community (2010)
- Lehigh Riverfront Master Plan (2012)
- Lehigh Valley: Return on Environment (2014)
- Downtown Allentown Development Plan (2014)
- Upside Allentown: Safe and Healthy Neighborhoods (2016)
- Livable Landscapes: Parks and Recreation Plan for Lehigh County (2018)
- Allentown Vision 2030 (2019)
- WalkRoll LV (2020)
- Future LV: The Regional Plan (2023)
- Comprehensive Plans / Recreation Plans for adjoining PA municipalities





# Vision and Goals from the 2006 Plan – *Does this vision still work ?*

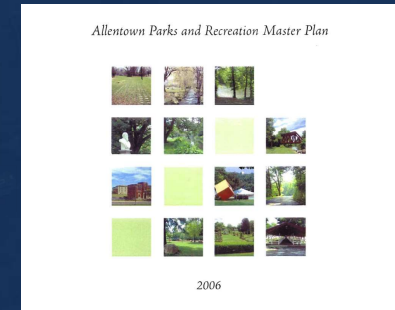
Vision: Allentown - “A City in a Park”

## Parks and Recreation as a System

- Managing open space as an integrated system
- Using trails and greenways to link parks, historic sites, and natural areas into a network of open space resources
- Encouraging local and regional connections to connect people to parks, schools, neighborhoods and conservation areas via public access, scenic landscape, or natural habitat corridors
- Having Allentown’s park and recreation system be accessible to all residents and visitors

## Parks and Recreation as Economic Development

- Mainstream parks and recreation as a planning tool for economic revitalization
- Parks and recreation projects would be viewed as essential in revitalization
- The City will do research on the quality-of-life and economic benefits of parks and recreation to promote the City as a place to live, work, visit, and do business

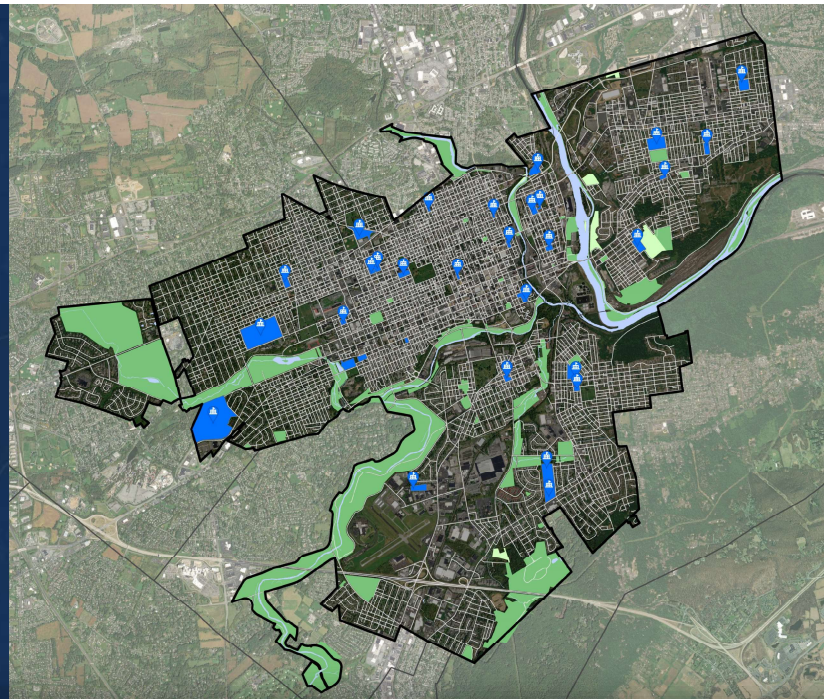


## Existing Conditions

### Legend

#### Existing

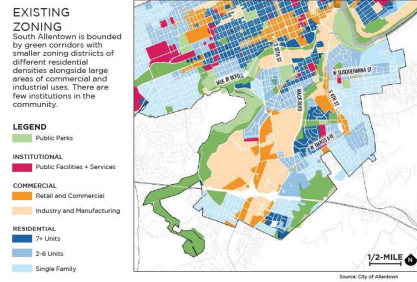
- Road
- Municipal Boundary
- Park and Rec
- Open Space
- Institutional
- Water



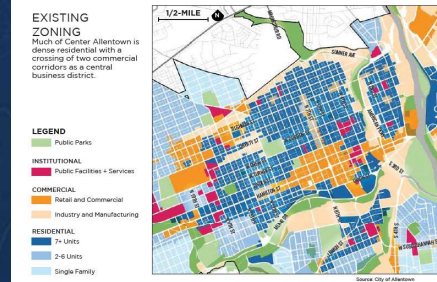


## Existing Zoning

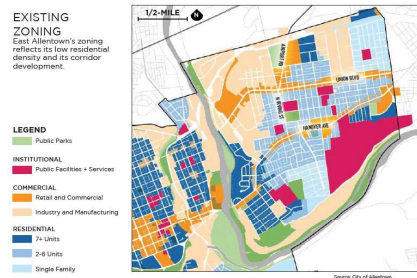
### South Allentown



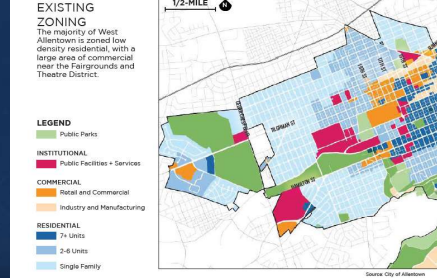
### Center Allentown



### East Allentown



### West Allentown



## Existing Land Use

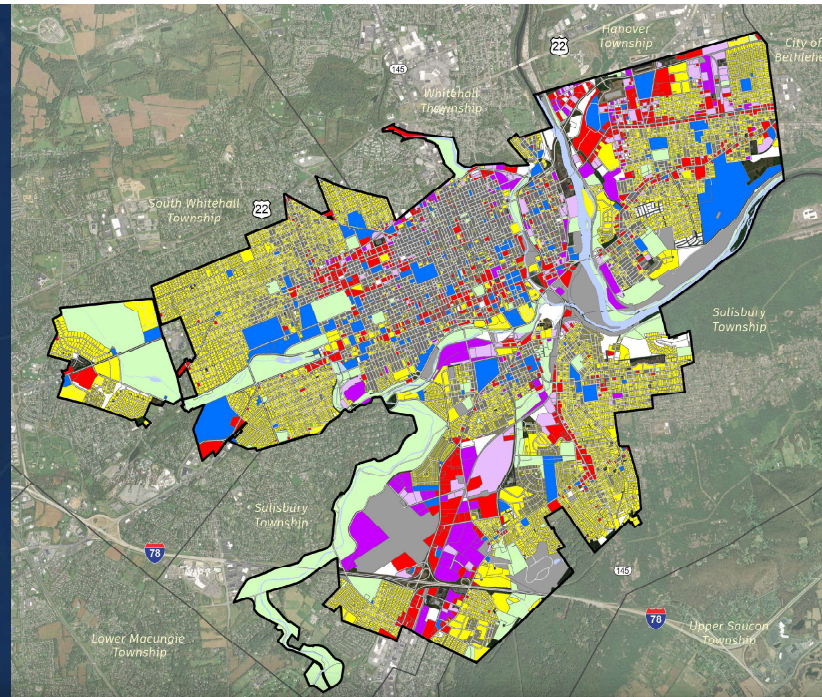
### Legend

#### Existing

- Roads
- Municipal Boundary
- Water

#### Analysis - Land Use

- Residential
- Commercial
- Industrial
- Wholesale / Warehousing
- Transportation & Utilities
- Institutional
- Recreation & Open Space
- Vacant / Unused Land



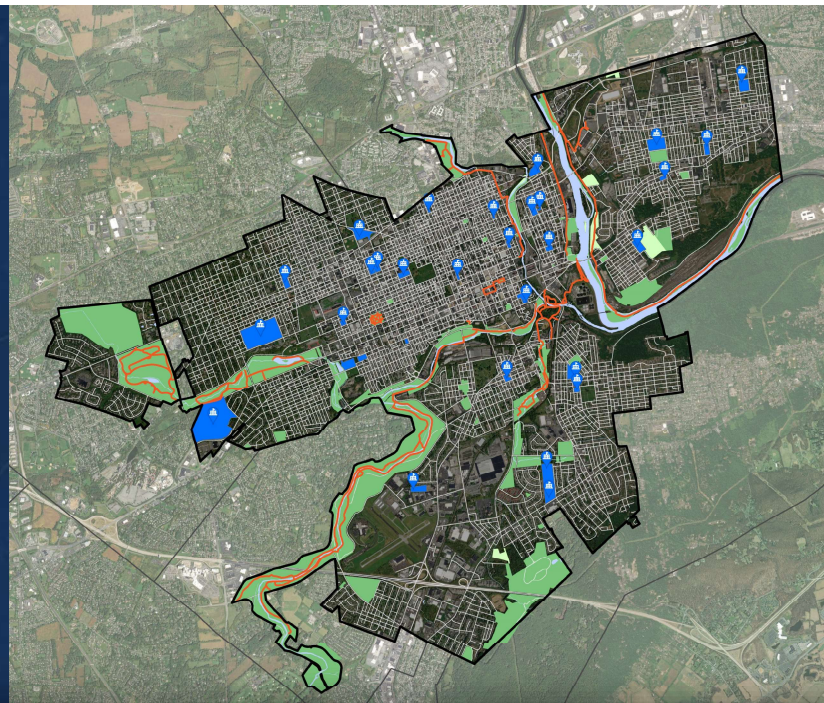


# Existing Trails

## Legend

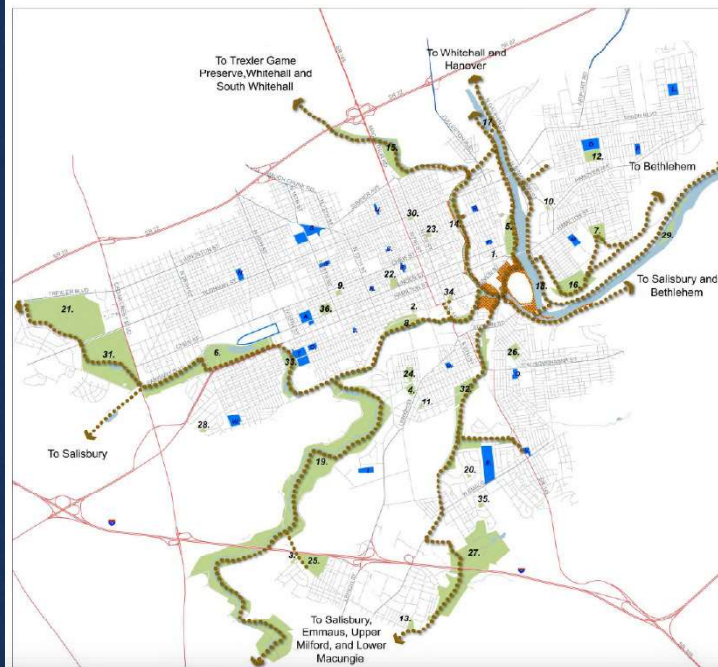
### Existing

-  Roads
-  Municipal Boundary
-  Park and Rec
-  Open Space
-  Institutional
-  Water
-  Trails



# Potential trails

Source: Allentown Parks and Recreation Master Plan (2006)



## Potential Trail Network

### CITY OWNED

1. Following East Lot
2. NICE 13 Play Lot
3. Salisbury Street Play Lot
4. Lancaster Park
5. Oak Ridge Park (including Lehigh Landing)
6. Cedar Grove Park
7. East Side Reservoir
8. Franklin Park
9. Franklin Park
10. Hancock Avenue Play Lot
11. Howard Rock Juniors Play Lot
12. King Street Park
13. Shasta Play Lot
14. Jordan Meadows
15. Jordan Park
16. Rock Park
17. Kennedy's Lock
18. Lehigh Canal
19. Lehigh Parkway
20. Lumber & Bunica Play Lot
21. Warrington Golf Course
22. Old Allentown Cemetery
23. Old Warringtons Marketplace
24. Patriots Park
25. Perry Run Park (Allentown Park)
26. Recreation Park
27. South Mountain Reservoir and Park
28. South Street Play Lot
29. Stevens Island
30. Stevens Park
31. Tucker Memorial Park
32. Trout Creek Park
33. Warrington Park (Allentown Park)
34. Warrington Park
35. Warrington Park
36. West Park

### SCHOOL OWNED

- A. Allen High School
- B. Central Elementary School
- C. Cleveland Elementary School
- D. David High School
- E. David Elementary School
- F. Harrison-Mason Middle School
- G. Jackson Elementary School
- H. Jefferson Elementary School
- I. Lehigh Parkway Elementary School
- J. Lincoln Elementary School
- K. Lehigh Valley Elementary School
- L. Lehigh Valley Elementary School
- M. Lehigh Valley Elementary School
- N. Lehigh Valley Elementary School
- O. Lehigh Valley Elementary School
- P. Lehigh Valley Elementary School
- Q. Lehigh Valley Elementary School
- R. Lehigh Valley Elementary School
- S. Lehigh Valley Elementary School
- T. Lehigh Valley Elementary School
- U. Lehigh Valley Elementary School
- V. Lehigh Valley Elementary School
- W. Lehigh Valley Elementary School

## Legend

-  Trails
-  City Owned - New Use
-  Allentown Parks
-  Schools



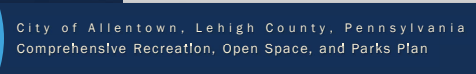
# Potential greenways

*Source: Allentown Parks and  
Recreation Master Plan (2006)*

**Allentown**  
All Inspiring


City of Allentown  
Comprehensive

**Allentown**  
All Inspiring



23

# STRAVA Heatmap - Run



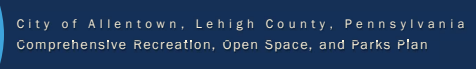
**Heat Map Legend**

**High Volume**

**Low Volume**

**Allentown**  
All Inspiring

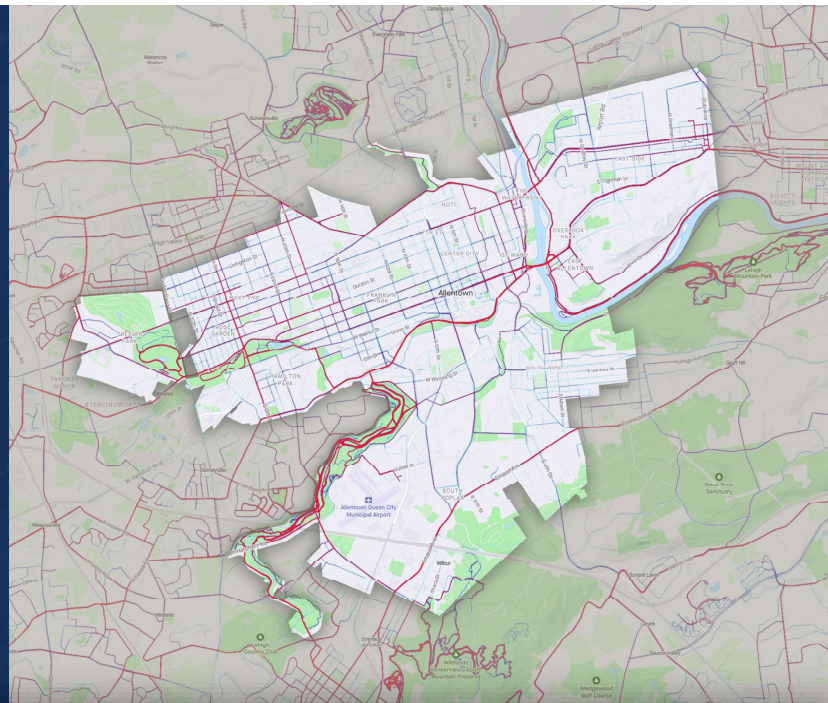
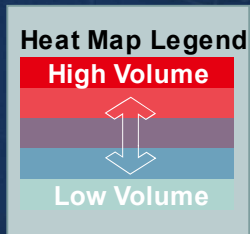
City of Allentown, Lehigh County  
Comprehensive Recreation, Open Space, & Parks Department



24



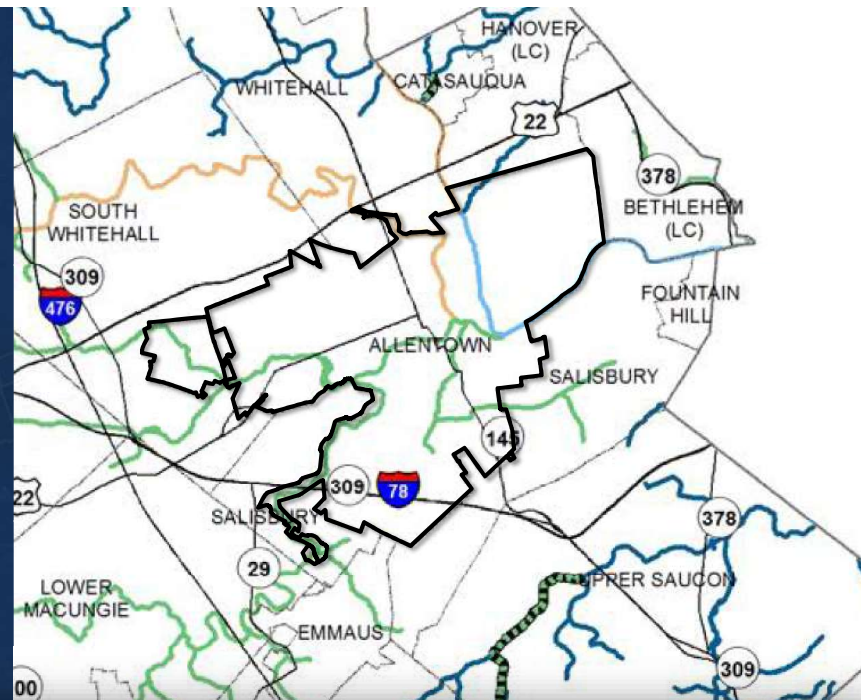
# STRAVA Heatmap - Ride



## Existing hydrology



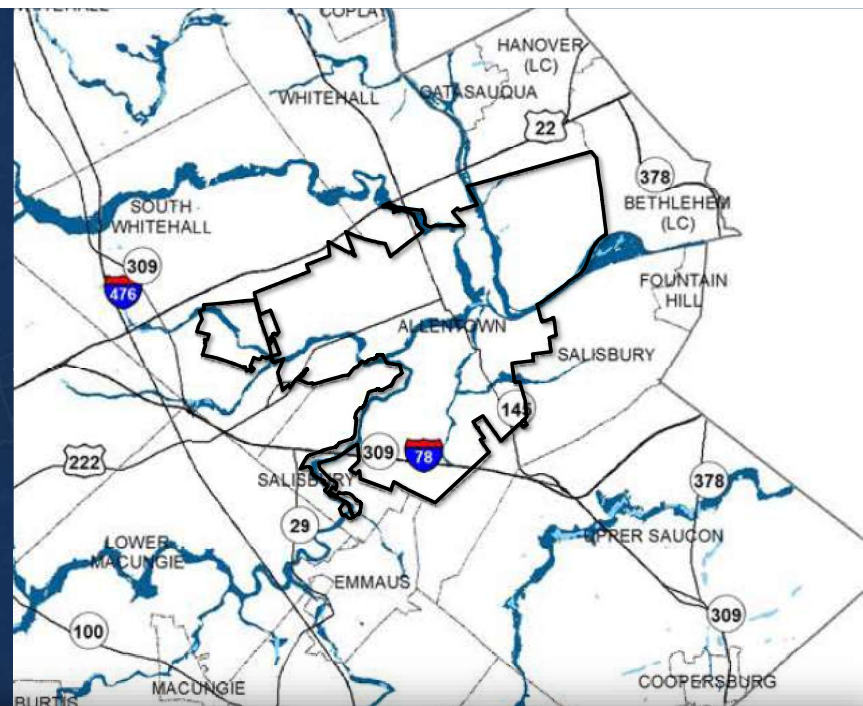
Source: Livable Landscapes (2018)



## Existing floodplains



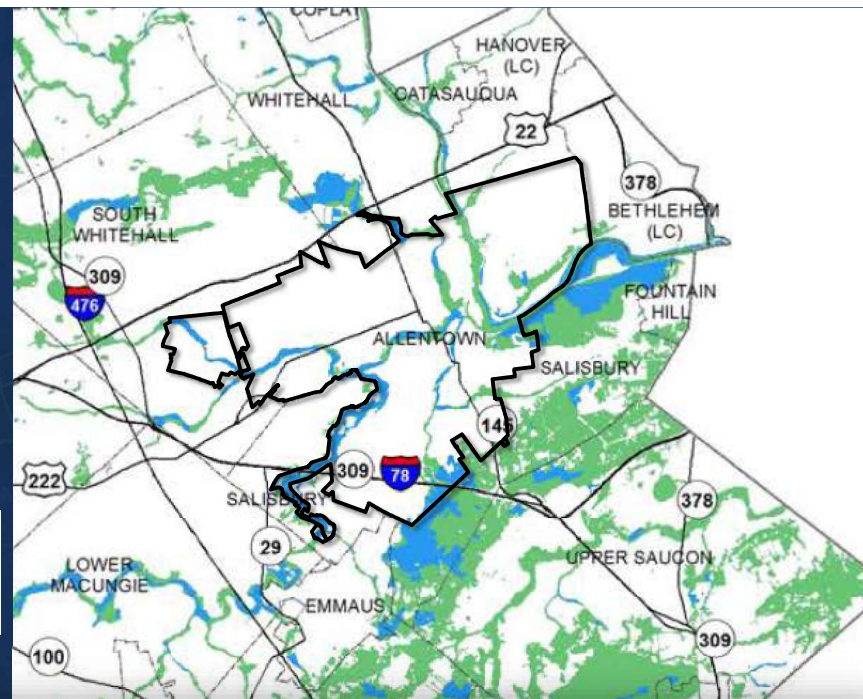
Source: Livable Landscapes (2018)



## Natural resources



Source: Livable Landscapes (2018)



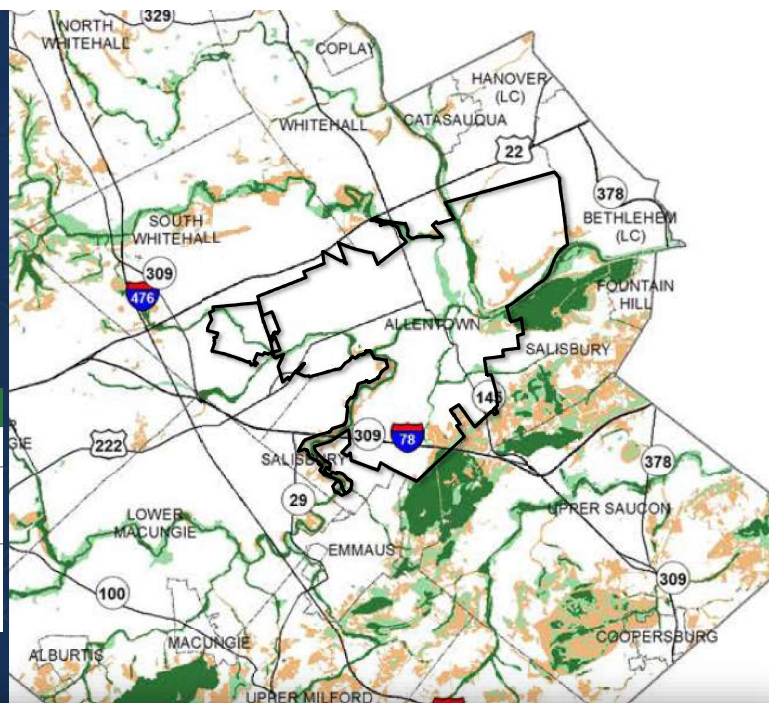


## Conservation areas



Conservation Priority	Description
Very high	Areas that should be given first consideration for public and private conservation acquisition programs.
High	Areas that should also be considered for acquisition, especially if they are part of a larger natural feature identified as very high conservation priority. In some cases, such as floodplains and steep slopes, high priority areas might be adequately protected through municipal zoning.
Medium	Areas that should be protected through zoning regulations, conservation subdivision design and conservation farming practices. Many of these areas may include small stands of woodlands, drainage swales or poorly drained soils that are either part of local farm operations or are part of larger residential lots.

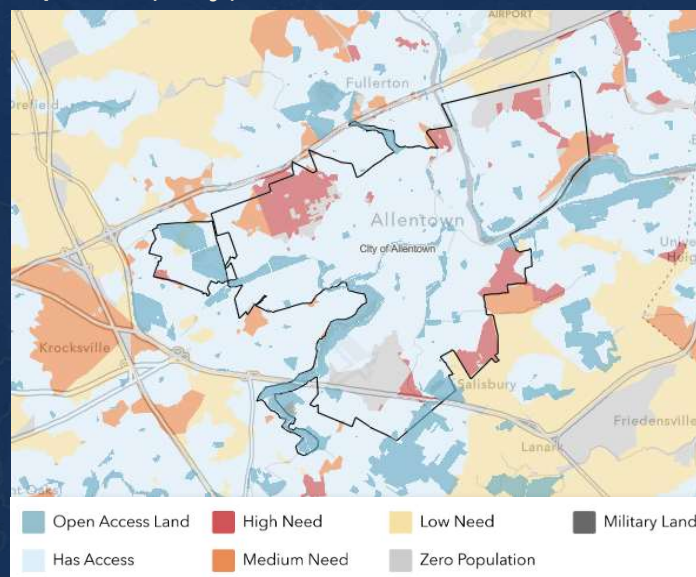
Source: Livable Landscapes (2018)



## DCNR: 10-Minute walk to open space (City)

### 10-Minute Walk Municipal Stats: City of Allentown (Lehigh County)

Total Population Served	107,286
Population Served (%)	87%
Kids Served	31,271
Kids Served (%)	89%
Adults Served	61,897
Adults Served (%)	87%
Seniors Served	14,118
Seniors Served (%)	84%
Low Income Households Served	23,065
Low Income Households Served (%)	89%
Medium Income Households Served	6,485
Medium Income Households Served (%)	82%
High Income Households Served	7,744
High Income Households Served (%)	79%



Source: DCNR, The Trust for Public Land

## DCNR: 10-Minute drive to trails (County)

### Trail Access Stats: Lehigh County

Total Population Served	335,367
Population Served (%)	91%
Kids Served	80,905
Kids Served (%)	90%
Adults Served	194,602
Adults Served (%)	91%
Seniors Served	59,864
Seniors Served (%)	92%
Low Income Households Served	52,741
Low-Income Households Served (%)	94%
Medium Income Households Served	24,046
Medium-Income Households Served (%)	92%
High Income Households Served	50,242
High-Income Households Served (%)	88%

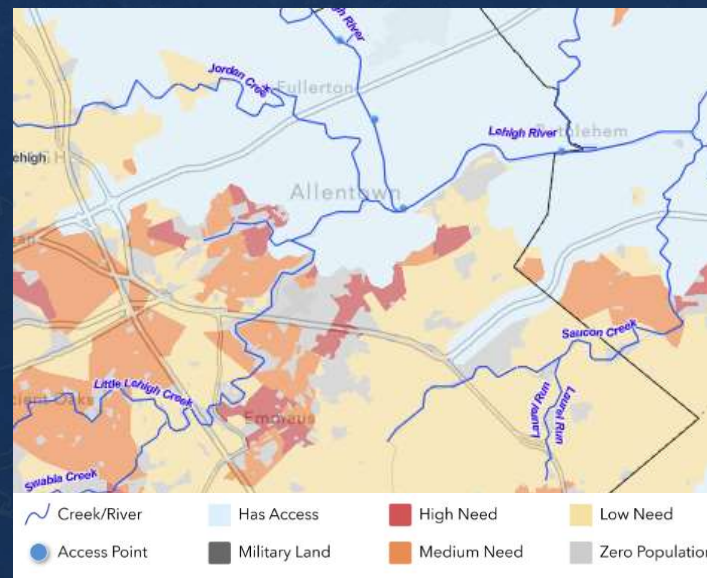


Source: DCNR, The Trust for Public Land

## DCNR: 10-Minute drive to water recreation (County)

### Recreational Water Access Stats: Lehigh County

Total Population Served	213,277
Population Served (%)	58%
Kids Served	53,203
Kids Served (%)	59%
Adults Served	124,755
Adults Served (%)	59%
Seniors Served	35,324
Seniors Served (%)	54%
Low Income Households Served	39,320
Low-Income Households Served (%)	70%
Medium Income Households Served	15,654
Medium-Income Households Served (%)	60%
High Income Households Served	25,986
High-Income Households Served (%)	46%



Source: DCNR, The Trust for Public Land



# Community Health Needs Assessment

## SOCIAL VULNERABILITY INDEX

The degree to which a community exhibits certain social conditions, including high poverty, low percentage of vehicle access, or crowded households, may affect that community's ability to prevent human suffering and financial loss in the event of disaster. These factors describe a community's social vulnerability.

The social vulnerability index is a measure of the degree of social vulnerability in counties and neighborhoods across the United States, where a higher score indicates higher vulnerability. Lehigh County has a social vulnerability index score of 0.64, which is greater than the state average of 0.41.

Report Area	Total Population	Socioeconomic Theme Score	Household Composition Theme Score	Minority Status Theme Score	Housing and Transportation Theme Score	Social Vulnerability Index Score
Lehigh County	362,613	0.40	0.51	0.87	0.72	0.64
Pennsylvania	12,791,181	0.34	0.30	0.60	0.58	0.41
United States	322,903,030	0.30	0.32	0.76	0.62	0.40

## Social Vulnerability Index Score

0.64

0.41

0.40

Source: 2022 Community Health Needs Assessment Health Profile – Lehigh County

Allentown  
All Inspiring

City of Allentown, Lehigh County, Pennsylvania  
Comprehensive Recreation, Open Space, and Parks Plan

33

## POVERTY – CHILDREN BELOW 100% FPL

Poverty is considered a *key driver* of health status.

In the report area, 19.50% or 15,901 children age 0-17 are living in households with income below the federal poverty level (FPL). This indicator is relevant because poverty creates barriers to access, including health services, healthy food, and other necessities, which contributes to poor health status.

Report Area	Total Population	Population Under Age 18	Population Under Age 18 in Poverty	Percent Population Under Age 18 in Poverty
Lehigh County	355,304	81,556	15,901	19.50%
Pennsylvania	12,380,284	2,613,746	458,890	17.56%
United States	316,715,051	72,235,700	13,377,778	18.52%
Allentown	115,326	31,402	11,746	37.41%

# Community Health Needs Assessment – physical activity, diabetes

## PHYSICAL INACTIVITY

Within the report area, 46,700 or 16.3% of adults age 20 and older self-report no active leisure time, based on the question: "During the past month, other than your regular job, did you participate in any physical activities or exercises such as running, calisthenics, golf, gardening, or walking for exercise?" This indicator is relevant because current behaviors are determinants of future health, and this indicator may illustrate a cause of significant health issues, such as obesity and poor cardiovascular health.

Report Area	Population Age 20+	Adults With No Leisure Time Physical Activity	Adults With No Leisure Time Physical Activity, %
Lehigh County	273,099	46,700	16.3%
Pennsylvania	9,782,259	2,149,232	20.9%
United States	243,008,284	55,201,407	22.1%

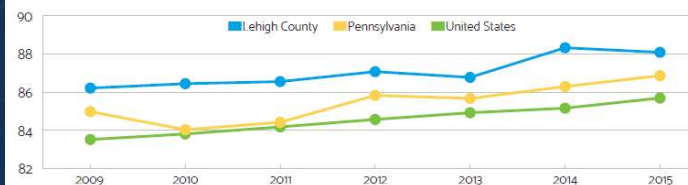
Note: This indicator is compared to the state average.

Data Source: Centers for Disease Control and Prevention, National Center for Chronic Disease Prevention and Health Promotion, 2014

## Annual Hemoglobin A1c Test by Year, 2009 through 2015

Percent of Medicare beneficiaries with diabetes with annual hemoglobin A1c test

Report Area	2009	2010	2011	2012	2013	2014	2015
Lehigh County	86.21	86.44	86.55	87.07	86.77	88.32	88.08
Pennsylvania	84.98	84.03	84.42	85.83	85.67	86.29	86.86
United States	83.52	83.81	84.18	84.67	84.92	85.16	85.69



Source: 2022 Community Health Needs Assessment Health Profile – Lehigh County

Allentown  
All Inspiring

City of Allentown, Lehigh County, Pennsylvania  
Comprehensive Recreation, Open Space, and Parks Plan

34

# Community Health Needs Assessment – poor health, chronic issues

## POOR OR FAIR HEALTH

This indicator reports the percentage of adults age 18 and older who self-report having poor or fair health (age-adjusted to the 2000 standard). Data are from the 2018 Behavioral Risk Factor Surveillance System (BRFSS) annual survey and are used for the 2021 County Health Rankings. This indicator is relevant because it is a measure of general poor health status.

Within the report area, there are 17,467 persons age 18 and older who self-report having poor or fair health. This represents 18.8% of the total population age 18 and older, which is greater than the state rate of 17.7%.

Report Area	Population Age 18+	Adults With Poor or Fair Health	Percentage of Adults With Poor or Fair Health
Lehigh County	92,948	17,467	18.8%
Pennsylvania	6,349,822	1,125,773	17.7%
United States	172,018,492	30,907,322	18.0%

Note: This indicator is compared to the state average.  
Data Source: Centers for Disease Control and Prevention, Behavioral Risk Factor Surveillance System. Accessed via County Health Rankings. 2018. Source geography: County

## CHRONIC CONDITIONS – ASTHMA (MEDICARE POPULATION)

This indicator reports the number and percentage of the Medicare fee-for-service population with asthma. Data are based on Medicare administrative enrollment and claims data for Medicare beneficiaries enrolled in the fee-for-service program. Within the report area, there were 2,436 beneficiaries with asthma based on administrative claims data in the latest report year. This represents 5.8% of the total Medicare fee-for-service beneficiaries.

Report Area	Total Medicare Fee-for-Service Beneficiaries	Beneficiaries With Asthma	Beneficiaries With Asthma, %
Lehigh County	42,320	2,436	5.8%
Pennsylvania	1,360,967	72,353	5.3%
United States	33,400,472	1,665,604	5.0%

Note: This indicator is compared to the state average.  
Data Source: Centers for Medicare and Medicaid Services, CMS – Geographic Variation Public Use File. 2018. Source geography: County

## Medicare Population With Asthma by Year, 2011 through 2018

This table reports the percentage of the Medicare fee-for-service population with asthma over time.

Report Area	2011	2012	2013	2014	2015	2016	2017	2018
Lehigh County	5.1%	5.3%	5.5%	5.5%	5.7%	5.8%	6.0%	5.8%
Pennsylvania	4.8%	4.9%	5.2%	5.3%	5.5%	5.4%	5.5%	5.3%
United States	4.9%	5.0%	5.1%	5.2%	5.3%	5.1%	5.1%	5.0%

Source: 2022 Community Health Needs Assessment Health Profile – Lehigh County

# Community Health Needs Assessment – obesity

## CHRONIC CONDITIONS – DIABETES (ADULT)

This indicator reports the number and percentage of adults age 20 and older who have ever been told by a doctor that they have diabetes. This indicator is relevant because diabetes is a prevalent problem in the U.S.; it may indicate an unhealthy lifestyle and puts individuals at risk for further health issues.

Within the report area, 27,730 of adults age 20 and older have diabetes. This represents 8.7% of the total survey population.

Report Area	Population Age 20+	Adults With Diagnosed Diabetes	Adults With Diagnosed Diabetes, Age-Adjusted Rate
Lehigh County	271,863	27,730	8.7%
Pennsylvania	9,776,609	1,070,648	9.4%
United States	245,628,960	25,942,874	9.5%

Note: This indicator is compared to the state average.  
Data Source: Centers for Disease Control and Prevention, National Center for Chronic Disease Prevention and Health Promotion

## OBESEITY

This indicator reports the number and percentage of adults age 20 and older self-report having a body mass index (BMI) greater than 30.0 (obese). Respondents were considered obese if their body mass index (BMI) was 30 or greater. Body mass index (weight [kg]/height [m]<sup>2</sup>) was derived from self-report of height and weight. Excess weight may indicate an unhealthy lifestyle and puts individuals at risk for further health issues.

Within the report area, there are a total of 85,637 adults age 20 and older who self-reported having a BMI greater than 30.0. This represents a 31.0% of the survey population.

Report Area	Population Age 20+	Adults With BMI > 30.0 (Obese)	Adults With BMI > 30.0 (Obese), %
Lehigh County	272,729	85,637	31.0%
Pennsylvania	9,783,405	3,008,801	30.5%
United States	243,101,202	72,159,365	29.5%
Allentown	90,199	32,291	35.4%

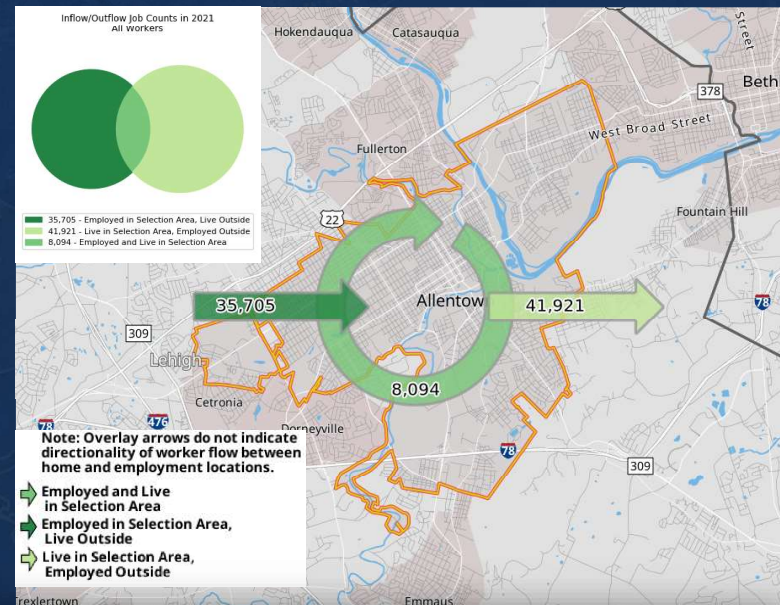
Source: 2022 Community Health Needs Assessment Health Profile – Lehigh County



## On the Map: Employment commuting patterns

- 43,799 jobs were inside the City – 8,094 were held by City residents
- 41,921 City residents commuted to jobs outside of the City
- Similar weekday and evening/weekend populations

Source: US Census





# Park Inventory

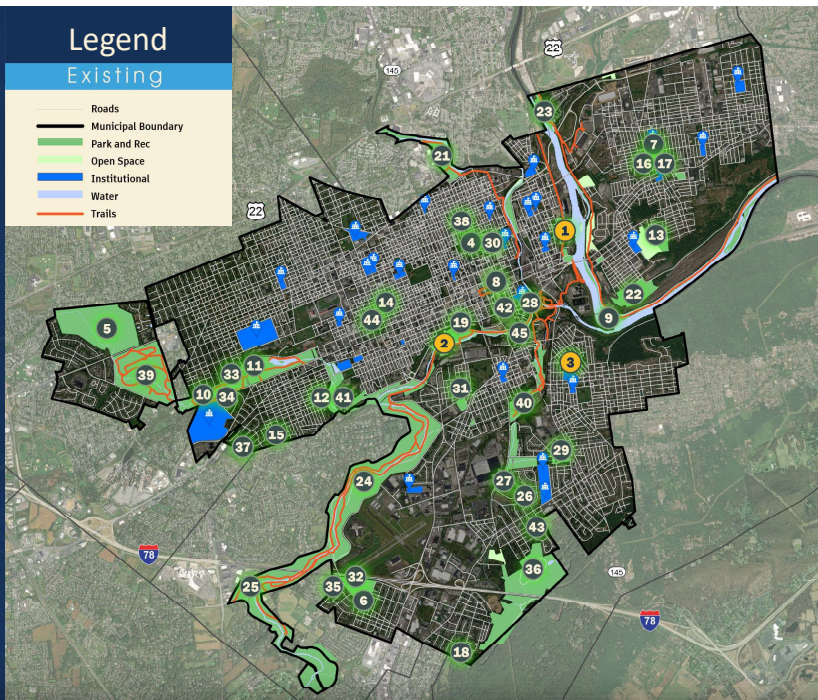
## Existing Parks:

1. Bucky Boyle Park
  2. Fountain Park
  3. Roosevelt Park
- } *Master plans will be developed for these parks.*
4. 5th & Alden Street Spray Park
  5. Allentown Municipal Golf Course
  6. Alton Park
  7. Andre Reed Park
  8. Arts Park
  9. Canal Park
  10. Cedar Beach Park
  11. Cedar Beach Pool
  12. Daddonna Lake and Terrace (Union Terrace) Park
  13. East Side Reservoir Park
  14. Franklin Park Playground
  15. Hamilton Park Playlot
  16. Irving Pool
  17. Irving Street Park Playground
  18. Ithaca Playlot
  19. Jackson Street Community Park
  20. Jordan Meadows
  21. Jordan Park
  22. Keck Park

## Legend

### Existing

- Roads
- Municipal Boundary
- Park and Rec
- Open Space
- Institutional
- Water
- Trails



# Park Inventory – cont.....

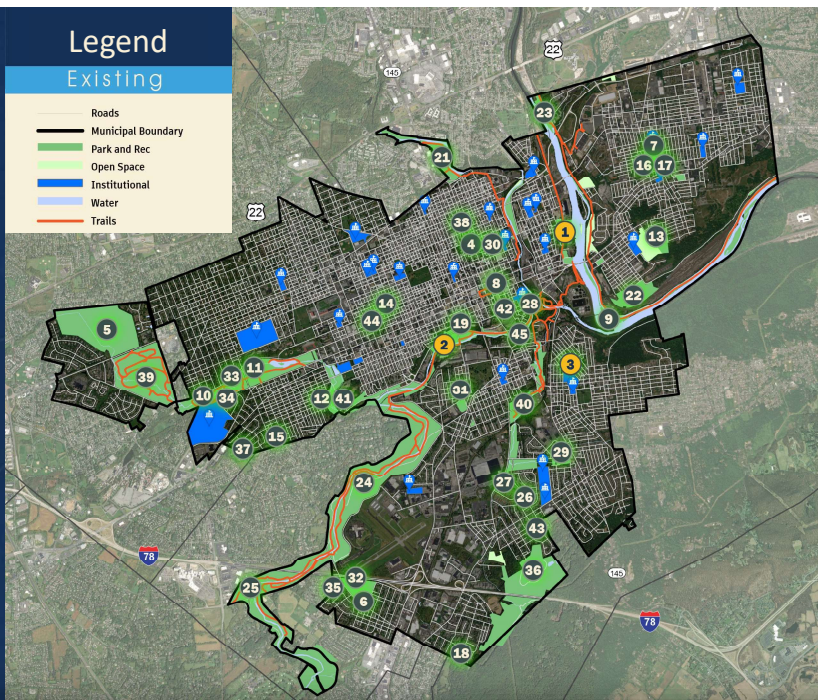
## Existing Parks:

23. Kimmet's Lock Park
24. Lehigh Canal Lehigh Parkway
25. Li'l Lehi Trout Nursery
26. Lumber & Benton Playlot
27. Mack Pool
28. MLK Memorial
29. Mountainville Memorial
30. Old Fairgrounds Playground
31. Patriots Park
32. Percy Ruhe (Alton) Park
33. Rose Gardens
34. Rose Garden Pavilions
35. Salisbury Drive Playlot
36. South Mountain Reservoir
37. South Street Playlot
38. Stevens Park Playground
39. Trexler Memorial Park
40. Trout Creek
41. Union Terrace Park
42. Valania Park
43. Walden Terrace Playlot
44. West Park
45. Wire Mill Meadow Arboretum

## Legend

### Existing

- Roads
- Municipal Boundary
- Park and Rec
- Open Space
- Institutional
- Water
- Trails

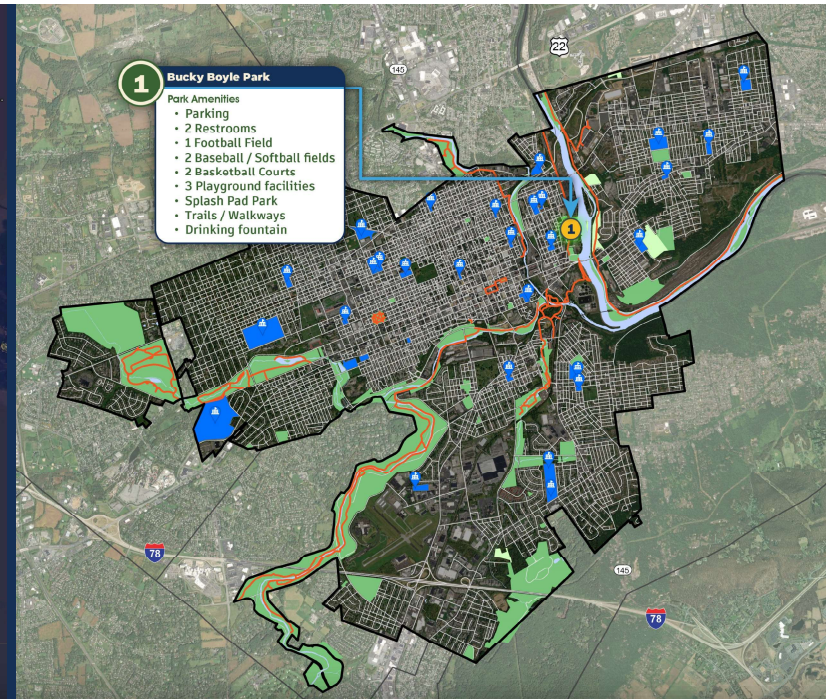




## Site Reconnaissance

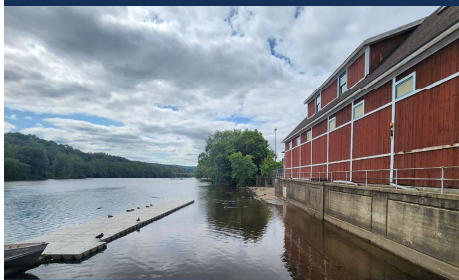


## Bucky Boyle Park

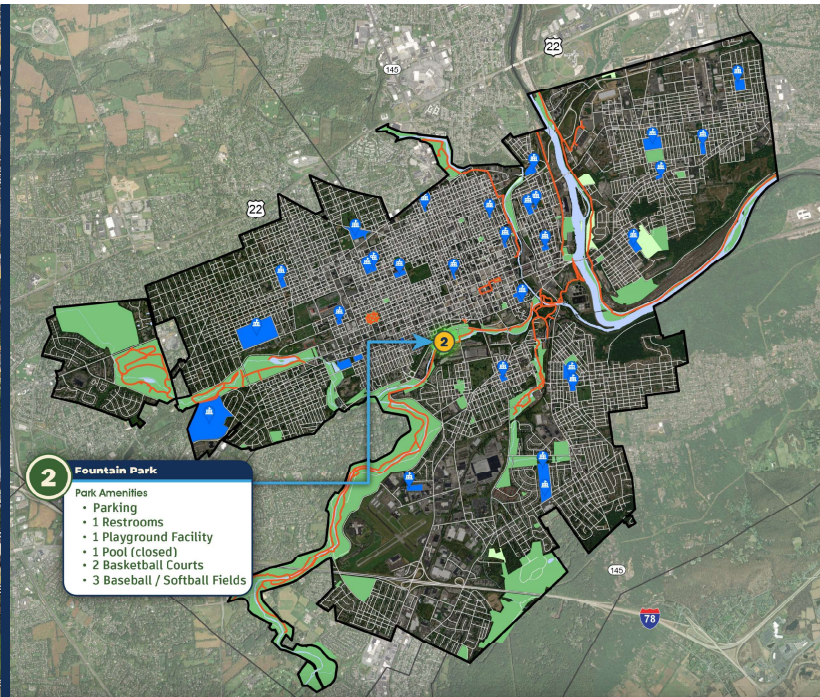
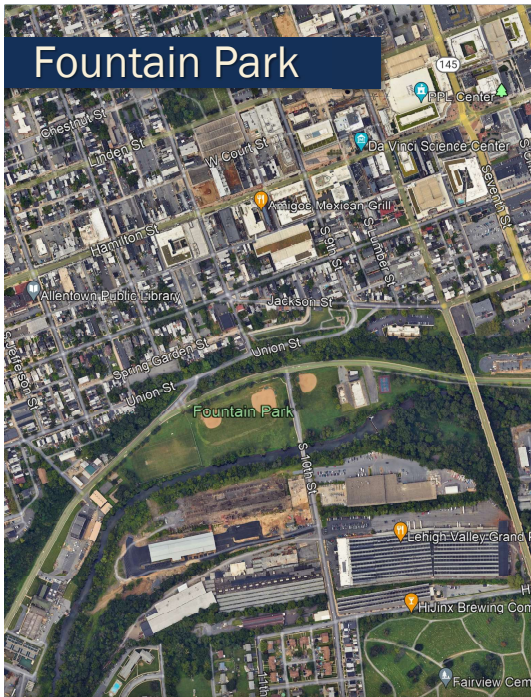




## Bucky Boyle Park



## Fountain Park

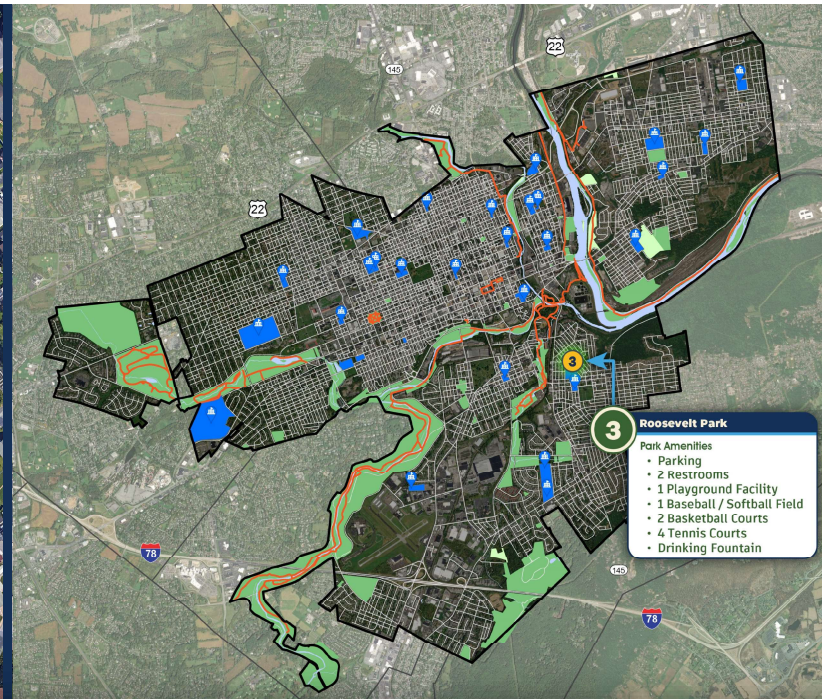
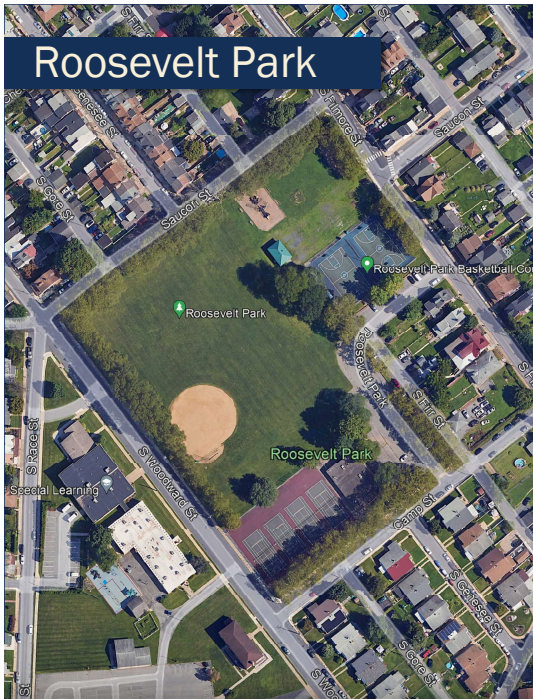




## Fountain Park



## Roosevelt Park



- Roosevelt Park**
- Park Amenities
  - Parking
  - 2 Restrooms
  - 1 Playground Facility
  - 1 Baseball / Softball Field
  - 2 Basketball Courts
  - 4 Tennis Courts
  - Drinking Fountain



## Roosevelt Park





# Public Opinion Survey



## City of Allentown Open Space & Recreation Plan

### Survey Introduction

Thank you for your interest in assisting with the planning of the City of Allentown's Park system, recreation programming, and open space needs. Over the next year, the City will develop a Comprehensive Parks, Recreation, and Open Space Plan, which will serve the following purposes:

- Determine growth opportunities for the parks and recreation system.
- Evaluate the city's management of its recreation programs and facilities.
- Establish goals and objectives for the city and its Parks and Recreation Department.
- Identify the steps needed to achieve the goals and objectives of the plan.

The City of Allentown is the 3rd largest city in Pennsylvania with a vast park system of over 2,000 acres and 35 parks. With a diverse socioeconomic landscape, this plan aims to identify projects and recreational programs that address the City's evolving needs.

This project is partially funded by a grant from the Community Conservation Partnerships Program administered by the Pennsylvania Department of Conservation and Natural Resources (DCNR), Bureau of Recreation and Conservation (Bureau).

This opinion survey is a vital part of the planning process and will take **approximately 15 minutes to complete**. The survey asks residents to consider existing strengths and future opportunities for the City's parks, recreation, and open space needs.

Residents will also have the opportunity to provide feedback at several public meetings to be held during the course of the planning process. Please check the City's website and notices for meeting dates.

Thank you for your time and participation.

### 9. For what purpose(s) do people in your household visit parks/recreation sites in the City of Allentown? *Select all that apply.*

- ☐ City of Allentown Parks & Recreation programs & events
- ☐ Other programs & events
- ☐ Youth sport leagues
- ☐ Adult sport leagues
- ☐ Pick-up sports
- ☐ Walking/Jogging/Hiking
- ☐ Dog walking
- ☐ Dog park
- ☐ Birding
- ☐ Enjoy/Explore/Experience nature
- ☐ Bike Riding
- ☐ Exercise
- ☐ Relaxation
- ☐ Fishing
- ☐ Playground
- ☐ Splash pad
- ☐ Basketball
- ☐ Tennis
- ☐ Pickleball
- ☐ Disc golf
- ☐ Golf
- ☐ Pavilion rental
- ☐ Other (please specify)



City of Allentown, Lehigh County, Pennsylvania  
Comprehensive Recreation, Open Space, and Parks Plan

48

# Public Opinion Survey

### 16. What amenities are missing in the City of Allentown parks?

*Select all that apply.*

- ☐ Inclusive/universally accessible play elements
- ☐ Additional Skate park
- ☐ Additional Exercise park
- ☐ Additional Splash Pad park
- ☐ Bike pump track
- ☐ Additional Swimming pool
- ☐ Lights for extended use at night
- ☐ Trash receptacles
- ☐ Parking
- ☐ Benches
- ☐ Pavilions
- ☐ Other (please specify)

### 17. Do you believe that the City of Allentown needs more athletic fields /courts?

- ☐ No
- ☐ Yes

### 24. What types of facilities or activities would you like to see available at Bucky Boyle Park? *Select all that apply.*

- ☐ Maintain Pavilion
- ☐ Maintain Baseball Softball Fields
- ☐ Maintain Football Field
- ☐ Maintain Basketball Courts
- ☐ Maintain Restrooms
- ☐ Larger Splash Pad Water Park
- ☐ Fishing
- ☐ Soccer Field
- ☐ Tennis
- ☐ Volleyball
- ☐ Nature-based Playground
- ☐ Inclusive Playground
- ☐ Biking
- ☐ Running
- ☐ Walking
- ☐ Shaded Areas
- ☐ Rowing/Kayaking Programs
- ☐ Passive Park Activities (e.g. bird watching, nature observation/photography, climbing)
- ☐ Picnic Tables
- ☐ Additional Parking
- ☐ Other (please specify)



City of Allentown, Lehigh County, Pennsylvania  
Comprehensive Recreation, Open Space, and Parks Plan

56

# Public Opinion Survey

34. In general, how well do you think the age groups listed below are served by the parks, recreation, and open space in the City of Allentown. Please answer this question for all age groups listed---even if your household does not have persons in that age group.

	1 (Very poorly)	2 (Somewhat poorly)	3 (Neither well or poorly)	4 (Somewhat well)	5 (Very well)
Children under 5	<input type="radio"/>	<input type="radio"/>	<input type="radio"/>	<input type="radio"/>	<input type="radio"/>
Children 5-12	<input type="radio"/>	<input type="radio"/>	<input type="radio"/>	<input type="radio"/>	<input type="radio"/>
Children 12-15	<input type="radio"/>	<input type="radio"/>	<input type="radio"/>	<input type="radio"/>	<input type="radio"/>
Older children/Young adults 16-20	<input type="radio"/>	<input type="radio"/>	<input type="radio"/>	<input type="radio"/>	<input type="radio"/>
Adults 21-39	<input type="radio"/>	<input type="radio"/>	<input type="radio"/>	<input type="radio"/>	<input type="radio"/>
Adults 40-64	<input type="radio"/>	<input type="radio"/>	<input type="radio"/>	<input type="radio"/>	<input type="radio"/>
Adults 65+	<input type="radio"/>	<input type="radio"/>	<input type="radio"/>	<input type="radio"/>	<input type="radio"/>

\* 38. Over the next 3 to 5 years, where should the City of Allentown's recreational / park / open space priorities be?

Select up to three (3).

- ☐ Offer greater variety of recreation programs
- ☐ Offer greater variety of community special events
- ☐ Development of the City of Allentown trail/pathway/sidewalk system for a more walk/bikeable community
- ☐ Add to or enhance amenities at existing parks
- ☐ Creation of new parks
- ☐ Preservation and/or protection of more open space. (Open space may be used for recreation or preserved from human use for environmental reasons.)
- ☐ Environmental improvements to existing parks/open spaces (native plantings, meadows, rain gardens, etc.)
- ☐ Nothing - maintain the status quo
- ☐ Other (please specify)





## Brainstorming

### GOALS

Goals for the project — initially broad, then specific

Facts - What we know already about the  
City of Allentown parks

### FACTS

### CONCEPTS

Ideas for attaining project goals – Opportunities for  
improvement

Partners - Groups, Businesses, Institutions  
to create a partnership with

### PARTNERS

## Brainstorming

### GOALS

### FACTS

### CONCEPTS

### PARTNERS

PROVIDE FOR  
ALL AGES

MANY MUNICIPAL  
PARKS

SAFER  
PEDESTRIAN  
CONNECTIONS

DCNR

PRESERVE  
RESOURCES

EXISTING  
TRAILS

DOG PARK

LEHIGH  
COUNTY

IMPROVE SAFETY  
FOR PEDESTRIANS  
& BICYCLES

EXISTING  
PLAYGROUNDS

“50 FOOT  
TALL WATER  
SLIDE”

LOCAL  
BUSINESSES

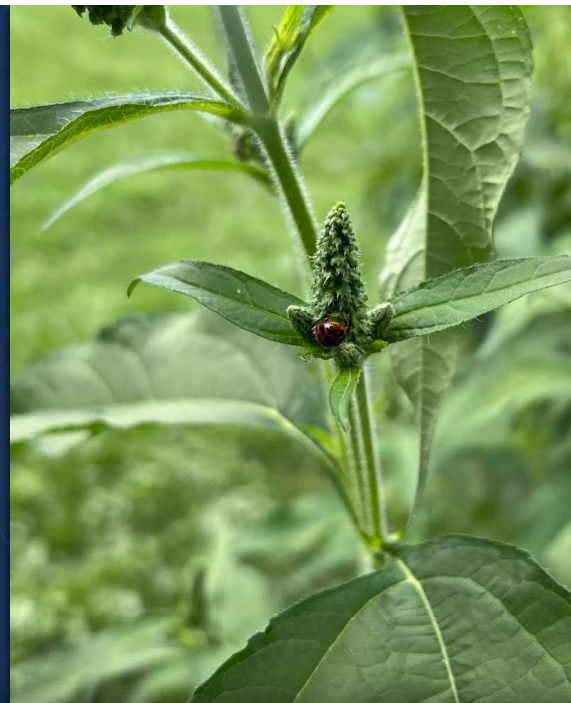
## Project Schedule

Meeting Type	Date	Time
Committee Meeting #1	Wednesday, September 25, 2024	7pm-9pm
Public Meeting #1 – Project Intro / Brainstorming	Tuesday, October 29, 2024	6pm-8pm
<b>Committee Meeting #2</b>	<b>Wednesday, November 13, 2024</b>	<b>7pm-9pm</b>
Public Meeting #2 – Existing Conditions, Initial Concepts	Wednesday, January 8, 2025	6pm-8pm
Committee Meeting #3	Wednesday, January 22, 2025	7pm-9pm
Public Meeting #3 – Refined Plans, Admin Analysis	Wednesday, February 26, 2025	6pm-8pm
Committee Meeting #4	Wednesday, April 9, 2025	7pm-9pm
Public Meeting #4 – Finance, Programming, Refined Plans	Wednesday, April 30, 2025	6pm-8pm
Key Person Interviews (20)	TBD	TBD
Committee Meeting #5	Wednesday, June 11, 2025	7pm-9pm
Online Public Opinion Survey	October 2024 – May 2025	
Public Meeting #5 – Draft Plans	Wednesday, June 25, 2025	6pm-8pm
Committee Meeting #6	Wednesday, September 10, 2025	7pm-9pm
City Council Meeting (to Adopt Plan – TBD)	October 2025	
City Staff Meetings	Estimated 1 per month	Online



## Next Steps - Simone Collins team

- Continue to review existing plans
- Continue mapping of existing conditions
- Continue to develop park inventory matrix
- Finalize public meeting logistics and assist with marketing materials
- Begin review and analysis of administration and programming



# Thank You!

SIMONE COLLINS LANDSCAPE ARCHITECTURE — 610.239.7601

Pankaj Jobanputra, AICP, Project Manager  
[pjobanputra@simonecollins.com](mailto:pjobanputra@simonecollins.com)

Anita Nardone, PE, Stormwater Analysis  
[anardone@simonecollins.com](mailto:anardone@simonecollins.com)

Robert Gladfelter, RLA, ASLA, Project LA, Natural Resources Analysis  
[rgladfelter@simonecollins.com](mailto:rgladfelter@simonecollins.com)

Leonard Bustos, Staff LA  
[lbustos@simonecollins.com](mailto:lbustos@simonecollins.com)

William Collins, RLA, Principal  
[wcollins@simonecollins.com](mailto:wcollins@simonecollins.com)

